

[LAST PAGE](#)

[RETURN TO MENU](#)



TTB-345 OPERATION MANUAL



the knowledge is in our hands



TTB 345 OPERATION - INFORMATION INDEX

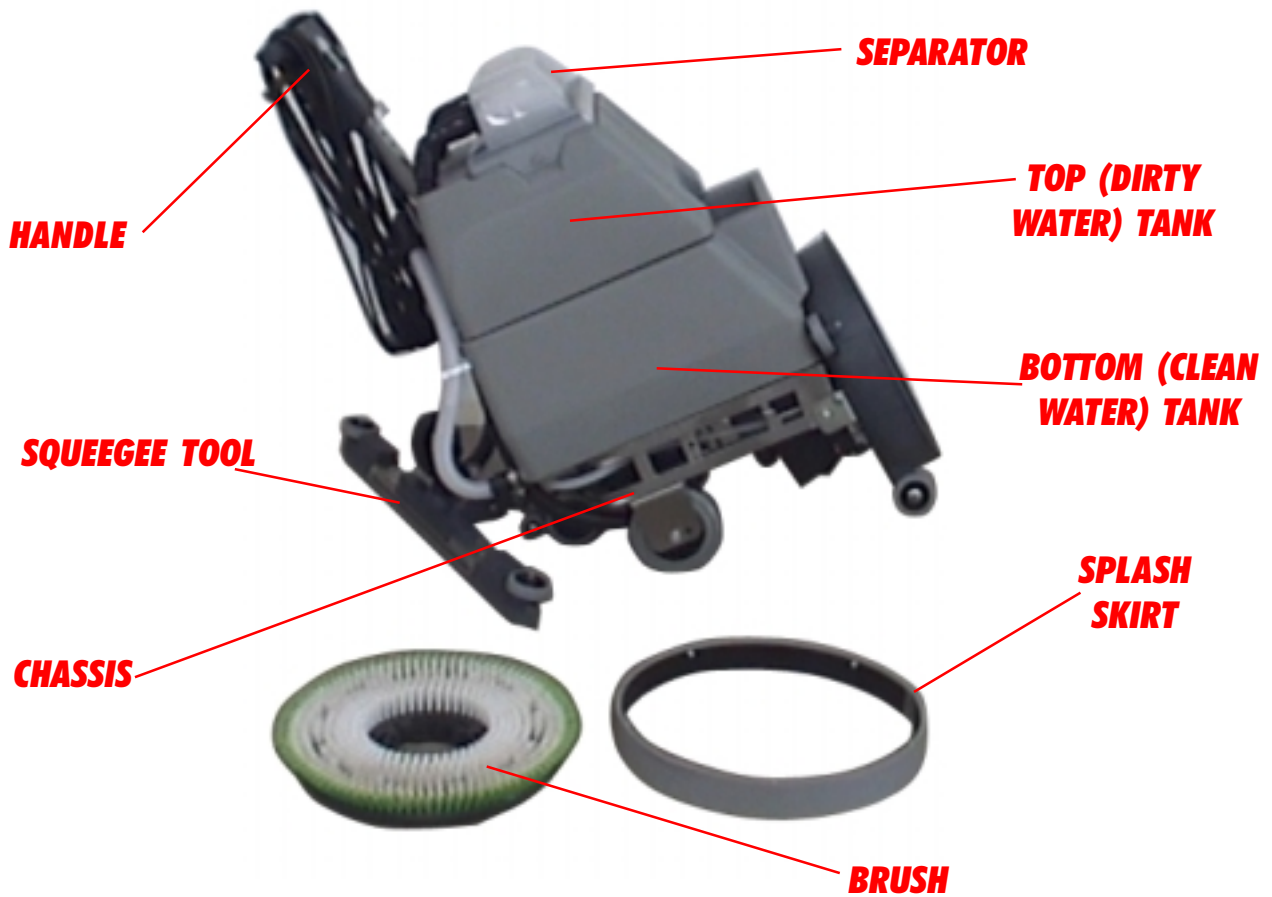
- 1. Part Identification Diagram**
- 2. Basic Operation Instructions**
- 3. Do's and Don'ts**
- 4. Fitting The Brush / Drive Board**
- 5. Filling The Clean Water Tank**
- 6. Water Release Controls**
- 7. Adjusting The Handle Height**
- 8. Handle Controls**
- 9. Emptying The Top Tank**
- 10. Emptying The Bottom Tank**
- 11. Cleaning The Separator Filter**
- 12. Cleaning The Top Tank Filter**
- 13. Cleaning The Bottom Tank Filter**
- 14. Daily Maintenance Routine**
- 15. Charging the Batteries**
- 16. Changing The Squeegee Blades**
- 17. Problem Solving**

TWINTEC 345





TTB 345 OPERATION - PART IDENTIFICATION



TWINTEC 345





TTB 345 OPERATION - OPERATING INSTRUCTIONS

- 1.** Ensure that charging lead has been disconnected
- 2.** Ensure that the isolator pin is in place
- 3.** Fit pad & drive board / scrubbing brush
- 4.** Unclip deck so that the pad / brush is positioned flat to the floor
- 5.** Lower the squeegee blade so that it is positioned flat to the floor
- 6.** Fill bottom tank with clean water and detergent
- 7.** Ensure that water on/off control is set at appropriate position
- 8.** Ensure that top tank(s) are empty
- 9.** Ensure that separator is fitted correctly
- 10.** Adjust handle height to suit
- 11.** Stand behind the machine
- 12.** Press both of the black rubber buttons on the handle display
- 13.** Press and hold in the yellow button on the rear of the handle and at the same time squeeze the triggers on the handle. Release the yellow button
- 14.** Push the machine in the direction in which you want to clean, holding in the black triggers
- 15.** When you want the machine to stop, release triggers

TWINTEC 345





TTB 345 OPERATION - DO'S AND DON'TS

DO ensure only competent persons unpack and assemble the machine

DO keep the machine clean

DO keep the brushes in good condition

DO replace any worn or damaged parts immediately

DO ensure that the working area is clear of obstructions

DO ensure that the working area is well illuminated

DO follow all the instructions supplied

DO ensure that if using a pad, it is washed after each use

DON'T use steam cleaners or pressure washers to clean the machine

DON'T use the machine outdoors in the rain

DON'T attempt machine maintenance or cleaning with the isolator pin intact

DON'T allow any inexperienced repairs

DON'T leave the brush or pad on the machine when not in use

DON'T allow the machine to be used by inexperienced or unauthorised personnel

DON'T lift or pull the machine by any of the operating triggers

DON'T leave the machine running in one spot, turn off if not being used

DON'T leave the brush or pad on the machine overnight, they will flatten

WARNING

It is essential that the equipment is correctly assembled and operated in accordance with current safety regulations. When using the equipment always ensure that all necessary precautions are taken to guarantee the safety of the operator and any other persons who may be affected. Wear non-slip footwear when scrubbing. Always use a respiratory mask in dusty environments. The use of other accessories may affect the safety of the scrubber dryer. A full range of brushes and other accessories are available from Numatic International.

TWINTEC 345





TTB 345 OPERATION - FITTING THE BRUSH / DRIVE BOARD



1. MACHINE SHOWN WITH SCRUB RING AND BRUSH.



2. PLACE SCRUB RING OVER RIM ON MACHINE DECK.



3. POSITION BRUSH ONTO THE GEARBOX WITH THE 3 INDENTATIONS ALLIGNING WITH THE 3 TABS. TURN ANTI-CLOCKWISE TO LOCK THE BRUSH IN PLACE.



4. THE BRUSH WILL NOW BE LOCKED IN PLACE AND READY FOR USE.

NOTE: WHEN USING A DRIVE BOARD FOLLOW THE SAME INSTRUCTIONS TO FIT DRIVE BOARD AND THEN FIX PAD CENTRALLY ONTO BOARD.

TWINTEC 345





TTB 345 OPERATION - FILLING THE CLEAN WATER TANK



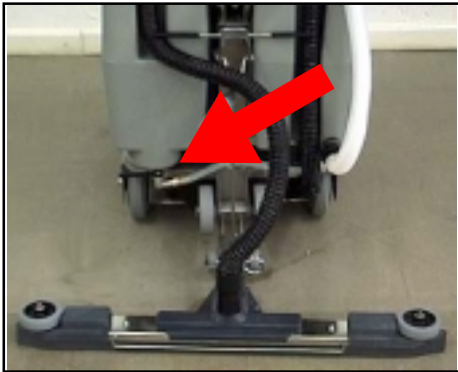
1. SIMPLY POUR WATER WITH A MIX OF YOUR CHOSEN DETERGENT INTO THE SPOUT ON THE FRONT OF THE BOTTOM TANK.

TWINTEC 345





TTB 345 OPERATION - WATER RELEASE CONTROLS



1.THE WATER CONTROL IS LOCATED AT THE REAR OF THE MACHINE (BOTTOM LH)



2. WITH THE TAP IN IT'S HORIZONTAL POSITION THERE WILL BE NO WATER FLOW.



3.IN ORDER TO RELEASE WATER, PUSH TAP TOWARDS THE FLOOR.

**NOTE:
FULL WATER FLOW IS 2.5 LITRES PER MINUTE. THIS TAP CAN BE ADJUSTED ANYWHERE BETWEEN NO FLOW AND FULL FLOW TO ACHIEVE THE DESIRED FLOW FOR THE TASK BEING UNDERTAKEN.**

TWINTEC 345





TTB 345 OPERATION - ADJUSTING THE HANDLE HEIGHT



1. SQUEEZE THE HANDLE ADJUSTMENT LEVER ON THE RIGHT HAND SIDE.



2. OPERATION IS EASIEST WITH THE HANDLE AT WAIST HEIGHT.



3. FOR TURNING IN TIGHT SPACES OR FOR LESS FLOOR PRESSURE, PUT THE HANDLE INTO A HIGHER POSITION.

**NOTE:
THE BEST WAY TO SCRUB IS TO FIND A HANDLE LEVEL AT WHICH YOU FEEL COMFORTABLE AND CAN EASILY CONTROL THE MACHINE AROUND CORNERS AND OBSTACLES AS WELL AS IN A STRAIGHT LINE.**

THE HIGHER THE HANDLE LEVEL, THE LESS FLOOR PRESSURE AND VICE VERSA.

TWINTEC 345





TTB 345 OPERATION - HANDLE CONTROLS

WATER ON / OFF

VACUUM ON / OFF



**WATER
ON**



**BRUSH
ON**



**BRUSH
OFF**



**BATTERY
FULLY
CHARGED**



**BATTERY
CLOSE
TO EMPTY**



**BATTERY
EMPTY**



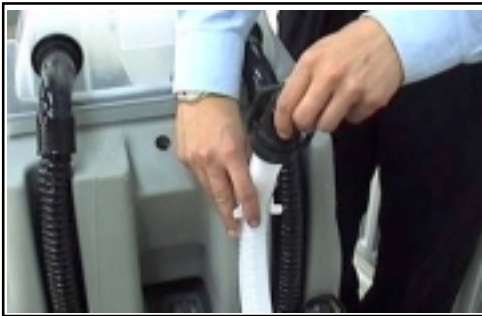
**VACUUM
ON**

TWINTEC 345





TTB 345 OPERATION - EMPTYING THE TOP TANK(S)



1. UNCLIP THE EMPTYING HOSE ON THE BACK OF THE TOP TANK.



2. UNDO THE BALL VALVE ON HOSE.



3. EMPTY INTO DRAIN.

**NOTE:
IF USING A MACHINE WITH
TWIN TANKS, REMOVE TANKS
AND EMPTY SIMPLY BY
POURING INTO DRAIN.**

TWINTEC 345





TTB 345 OPERATION - EMPTYING THE BOTTOM TANK



1. UNCLIP THE EMPTYING HOSE ON THE BACK OF THE BOTTOM TANK.



2. UNDO THE BALL VALVE ON HOSE.



3. EMPTY INTO DRAIN.

TWINTEC 345





TTB 345 OPERATION - CLEANING THE SEPARATOR FILTER



1. REMOVE THE WATER SEPARATOR.



2. REMOVE THE DIRTY WATER FILTER FROM INSIDE THE SEPARATOR.



3. RINSE THROUGH WITH CLEAN WATER AND REPLACE.

TWINTEC 345





TTB 345 OPERATION - CLEANING THE TOP TANK FILTER



1. REMOVE THE WATER SEPARATOR.



2. REMOVE THE FILTER FROM INSIDE THE TOP TANK.



3. RINSE THROUGH WITH CLEAN WATER AND REPLACE.

**NOTE:
TWIN TANK MODELS DO NOT
HAVE A TOP TANK FILTER.**

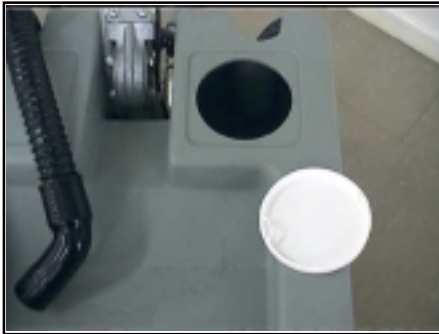
**NOTE:
IF STANDING BEHIND THE
MACHINE, THE FILTER
SHOULD ALWAYS BE POSI-
TIONED I THE LEFT HAND
SIDE OF THE TANK.**

TWINTEC 345

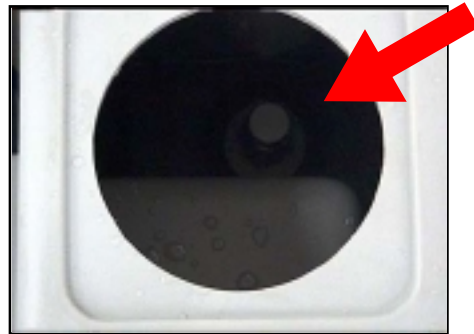




TTB 345 OPERATION - CLEANING THE BOTTOM TANK FILTER



1. REMOVE THE TOP TANK(S) AND FILTER CAP SO THAT YOU CAN SEE THE CLEAN WATER FILTER.



2. REMOVE THE FILTER FROM INSIDE THE BOTTOM TANK.



3. RINSE THROUGH WITH CLEAN WATER AND REPLACE.

TWINTEC 345





TTB 345 OPERATION - DAILY MAINTENANCE ROUTINE



1. RINSE THE BRUSH WITH CLEAN WATER ON A DAILY BASIS.



2. RINSE THE SQUEEGEE ON A DAILY BASIS AND REMOVE ANY DEBRIS.



3. RINSE DIRTY WATER TANK(S) WITH CLEAN WATER AND EMPTY AS NORMAL.



4. IF MACHINE IS NOT TO BE USED FOR MORE THAN 2 DAYS, RINSE AND EMPTY THE CLEAN WATER TANK.

TWINTEC 345





TTB 345 OPERATION - CHARGING THE BATTERIES



1. LIFT THE FLAP ON THE MACHINE HANDLE AND INSERT CHARGING LEAD.



2. PLUG THE CHARGING LEAD INTO A STANDARD 230 or 110 VOLT SOCKET.

NOTE:

WHEN THE MACHINE IS CHARGING YOU WILL BE ABLE TO HEAR THE COOLING FAN. THIS WILL AUTOMATICALLY SWITCH OFF WHEN THE MACHINE IS FULLY CHARGED.

BATTERY CHARGE TIME: 8 HOURS

TWINTEC 345

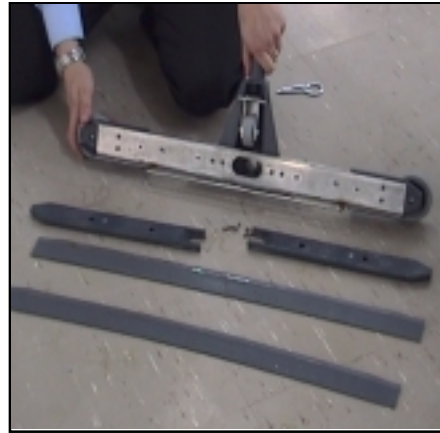




TTB 345 OPERATION - CHANGING THE SQUEEGEE BLADES



1. REMOVE THE SQUEEGEE TURN UPSIDE DOWN, AND REMOVE THE 4 SCREWS ALONG THE CENTRE OF THE TOOL.



2. LIFT AND REMOVE THE 2 PLASTIC INSERTS AND DISCARD THE WORN BLADES.



3. PLACE THE NEW BLADES INTO POSITION WITH THE RIBBED SIDES FACING OUTWARD. ENSURE THAT THE BLADES OVERHANG EQUALLY AT EACH END.



4. ALIGN PLASTIC INSERTS AND APPLY PRESSURE UNTIL YOU FEEL THE BLADE GRIP INTO PLACE. REPLACE SCREWS AND PUT SQUEEGEE BACK ONTO MACHINE.

**NOTE:
REPLACEMENT SQUEEGEE BLADE PART NUMBER: 217213**

TWINTEC 345





TTB 345 OPERATION - PROBLEM SOLVING

MACHINE NOT PICKING UP WATER

CHECK - SQUEEGEE BLADES ARE NOT WORN

CHECK - SQUEEGEE IS TOUCHING FLOOR

CHECK - HOSE IS CONNECTED TO SQUEEGEE

CHECK - HOSE IS CONNECTED TO SUCTION DOME

CHECK - SUCTION DOME IS SECURED TO TOP TANK

CHECK - HOSE FROM SUCTION DOME IS CONNECTED TO VAC MOTOR

NO WATER GOING ONTO FLOOR

CHECK - WATER CONTROL IS TURNED ON - SEE HANDLE CONTROLS PAGE

CHECK - WATER TAP IS TURNED ON - SEE WATER ON / OFF PAGE

CHECK - CLEAN WATER TANK IS NOT EMPTY

MACHINE ONLY RUNS FOR SHORT PERIODS

CHECK - BATTERIES ARE CHARGED - SEE CHARGING PAGE

CHECK - MACHINE HANDLE IS POSITIONED AT WAIST HEIGHT

NOTE: THIS MACHINE ONLY RUNS FOR 2 - 2.5 HOURS ON FULL BATTERY

TWINTEC 345

[FIRST PAGE](#)

[RETURN TO MENU](#)

