



MITHO PLUS

# MITHO PLUS



IPC Eagle



# MITHO PLUS

## PUMP

- Light alloy pump head.

- 3 stainless steel pistons.

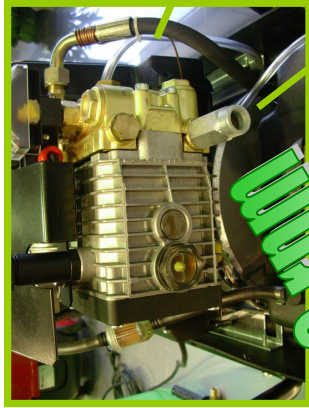
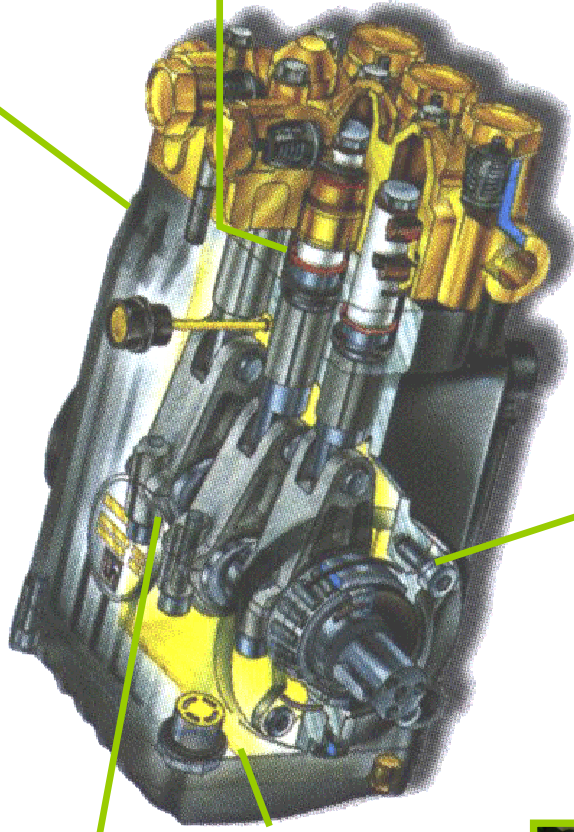
- Mechanical components with low working temperature.

CRANK TYPE H.P. PUMP: high efficiency.

The pump is lubricated with normal SAE 20W 30 oil.

The pump is separated from the motor and it is possible to replace and/or repair it with standard tools.

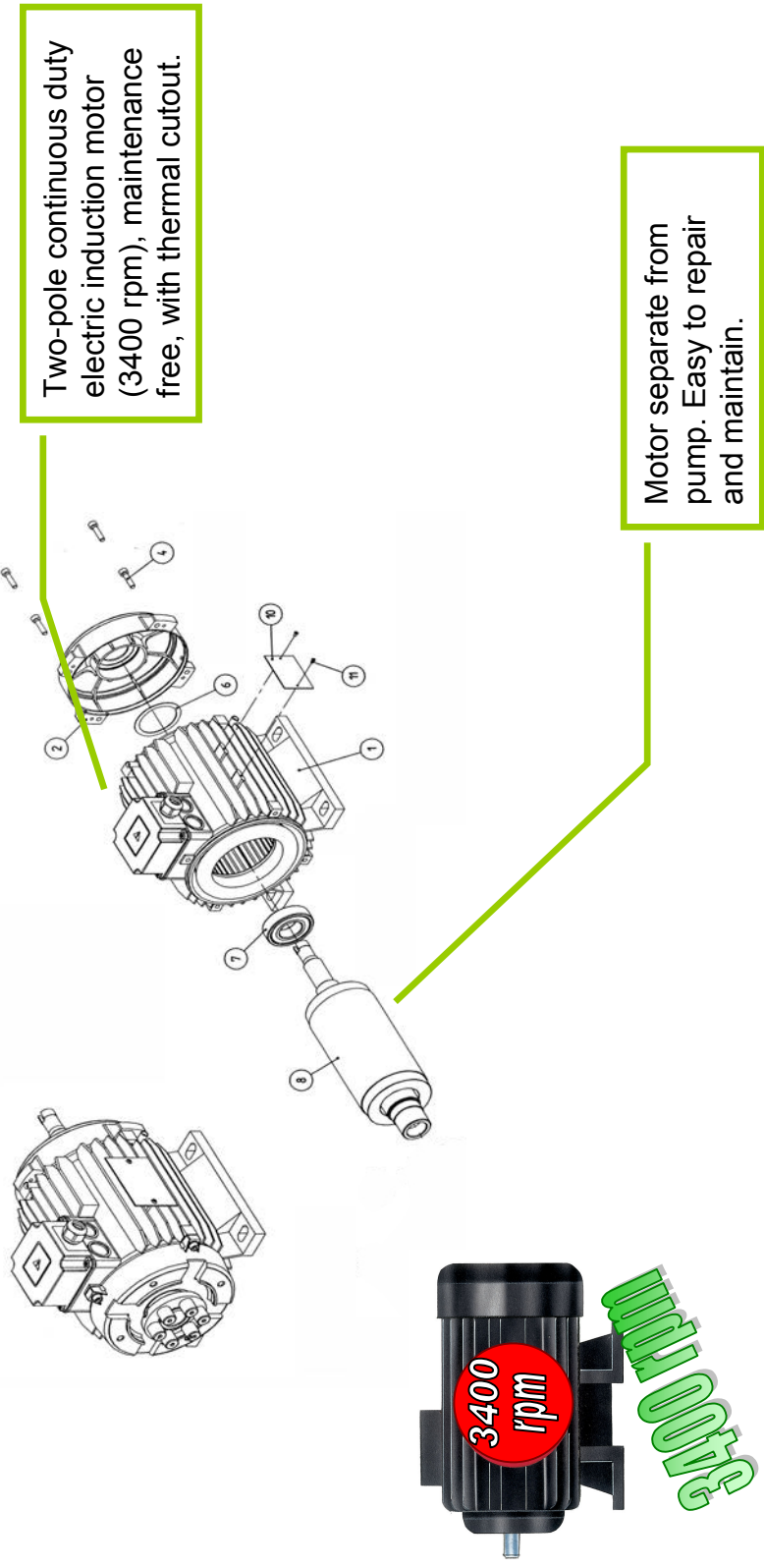
Low noise.





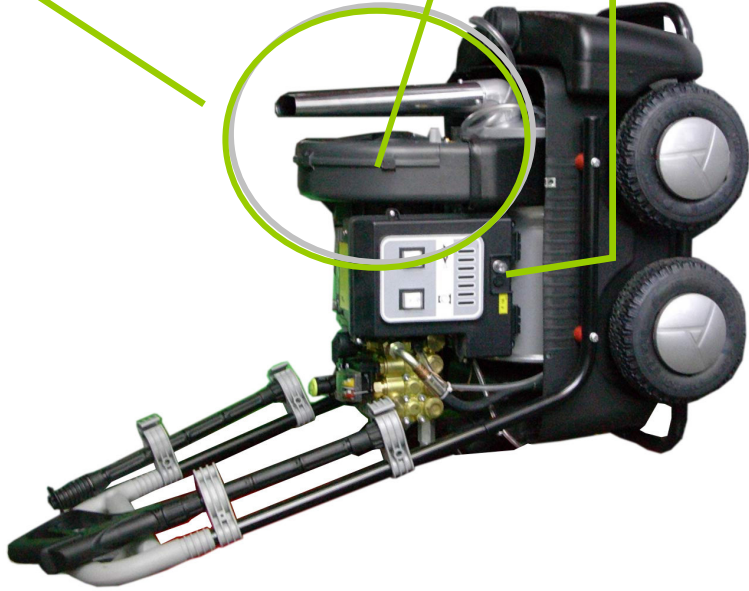
MITHO PLUS

# ELECTRIC MOTOR





# BOILER



## Boiler:

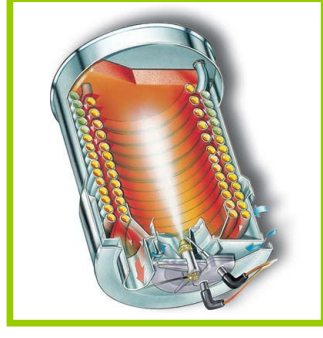
- 1. Made of painted steel, to guarantee a higher mechanical and thermal resistance and a longer working life.
- 2. High combustion efficiency in respect of international standards and regulations.
- 3. Can be dismantled without using spanners and/or other tools. Makes cleaning and/or maintenance faster... even in urgent or unexpected situations.
- 4. The heat exchange coil is double loop for a maximum heat exchange efficiency.

## Ventilator motor:

The ventilator motor is not independent from the main motor. It guarantees an excellent combustion efficiency.

## Diesel pump:

Not affected by the presence of water and/or other impurities in the diesel in order to protect operation of the machine and prevent a costly maintenance.



Boiler frame in high efficiency painted steel and double loop coil in treated steel.



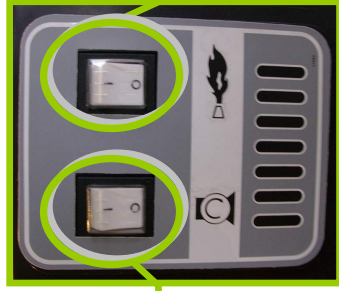


# MITHO PLUS

## TECHNICAL FEATURES



Lance with water jet angle adjustment and detergent control.



ON – OFF machine.

Hot-cold water selection switch.



Handle for pressure regulation.

Lance with turbo rotating nozzle.



## MITHO PLUS

# TECHNICAL FEATURES



Detergent is easily delivered (in low pressure) simply by using the lance.

Remote controlled Safety-Stop shuts the machine down after three by-passes or definitively in the event of leaks in the hydraulic circuit.



## MITHO PLUS



## STRUCTURE

Ergonomic design of handle for an easy and comfortable transport.

Lance, gun and accessory holder to make work easier.

Hose reel kit (optional accessory – cod. KTRI39111).

4 wheels with a big diameter (10 in.) for a suitable and comfortable transfer.

## STRUCTURE AND EXTERNAL COWLING

Made entirely of materials which are:

- Shockproof.
- To protect the machine from damage and extend its working life by protecting it from wear.
- Resistant to UV rays.
- To guarantee both constant mechanical resistance and a long term attractive appearance.
- Electrical enclosures IPX5 protection, protected against water splashes from any direction.
- To protect components and above all guarantee user safety.
- Resistant to sudden temperature changes.
- To guarantee the constant mechanical resistance of the structure and continuous operation of all protective devices, even in the toughest conditions.

## DIESEL AND DETERGENT TANK

Made from material which is:

- Shockproof
- Resistant to chemical action in to avoid both economic damage and the consequences and risks associated with dispersion of inflammable or pollutant liquids.



**IPC** Eagle

## MITHO PLUS



## TECHNICAL FEATURES

Model	MITHO PLUS 1202 M
Remote control	Safety Total Stop 3' Delay
Pressure – PSI	0÷1200
Flow rate - GPM	max 1,6
Power supply - Ph-V-Hz	1 – 120 – 60
Output water temperature - °F	max 195
Fuel consumption – GPM	0,7
Absorbed power – kW	1,9
Motor power – kW (HP)	1,25 (1,7)
Diesel tank - gal	1
Detergent tank - gal	1,3
Descaler tank - gal	-
Dimensions - LxWxH	27x20x29 in
Weight - lbs	125

**Standard Accessories:** Water gun with heatproof handgrip. High pressure hose (50ft). Lance with water jet angle adjustment and detergent control. Turbo nozzle.



**IPC Eagle**